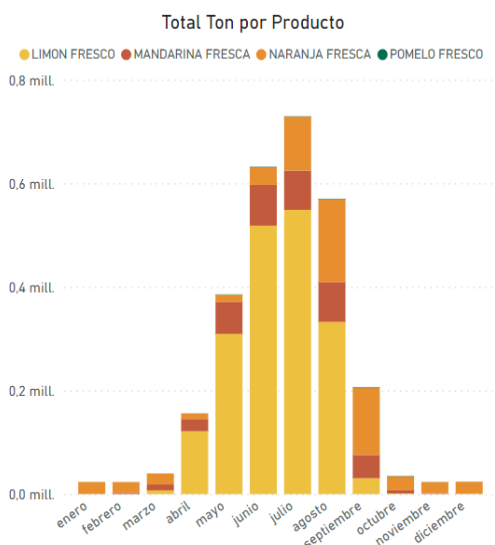


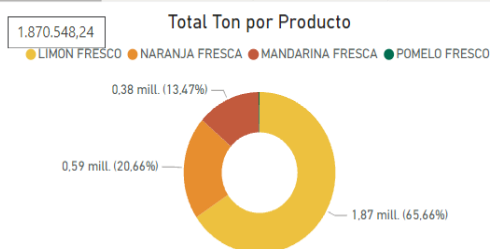
EXPORTACION FRUTA FRESCA ARGENTINA



AÑO: Todas | MES: Todas | SEMANA: Todas



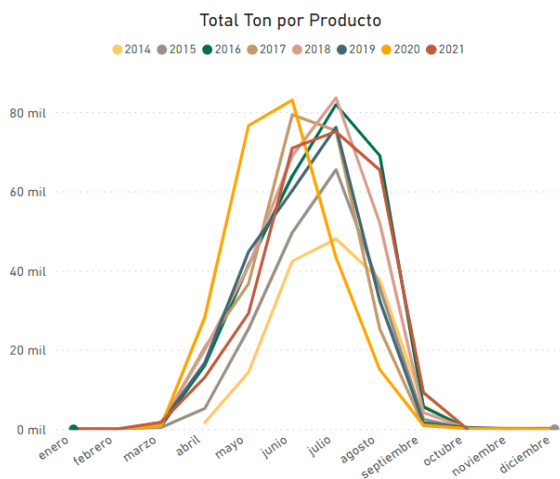
Mes	LIMÓN FRESCO	MANDARINA FRESCA	NARANJA FRESCA	POMELO FRESCO	Total
enero	120.76	45.21	23.294.32	37.32	23.497.61
febrero	111.70	2.314.89	20.930.48	4.30	23.361.36
marzo	7.311.75	11.308.98	21.217.96	75.58	39.914.27
abril	121.309.19	23.652.10	10.668.19	306.96	155.936.45
mayo	309.202.13	62.212.68	13.319.86	677.70	385.412.38
junio	518.304.04	78.649.90	34.772.25	633.58	632.359.76
julio	548.861.92	75.806.58	104.060.19	707.17	729.435.86
agosto	332.441.14	77.166.81	159.197.59	1.177.81	569.983.35
septiembre	30.711.35	44.835.21	129.631.64	1.184.29	206.362.49
octubre	1.238.42	6.094.14	26.831.16	815.00	34.978.71
noviembre	484.13	1.395.90	21.297.95	242.65	23.420.63
diciembre	451.72	291.16	23.188.69	77.76	24.009.33
Total	1.870.548,24	383.773,55	588.410,28	5.940,12	2.848.672,20



EXPORTACION FRUTA FRESCA ARGENTINA



AÑO: Todas | MES: Todas | SEMANA: Todas | PRODUCTO: LIMÓN FRE...



Mes	2014	2015	2016	2017	2018	2019	2020	2021
enero		62.12	0.81				23.81	34.02
febrero		23.65		22.68			45.36	20.00
marzo		397.57	676.24	944.87	1.474.26	1.388.59	693.07	1.737.15
abril	1.624.54	5.152.99	16.087.02	20.641.91	19.927.42	16.703.95	28.148.83	13.022.53
mayo	14.302.40	25.259.68	41.389.09	36.646.73	41.065.86	44.746.24	76.621.36	29.170.76
junio	42.336.02	49.578.95	63.875.81	79.349.41	68.968.24	60.202.13	83.067.91	70.925.57
julio	48.007.88	65.456.74	81.892.21	75.311.11	83.620.07	76.209.26	43.298.87	75.065.78
agosto	37.606.03	35.724.87	69.035.67	25.267.12	51.989.93	32.392.80	15.032.76	65.391.95
septiembre	5.894.43	2.480.46	5.579.96	825.38	4.174.71	1.610.45	963.16	9.182.81
octubre	190.51	51.84	163.09	221.88	124.97	374.59	89.88	21.66
noviembre	152.28			28.35	175.81	68.63	59.06	
diciembre	126.36	25.92			94.54	182.67	22.23	
Total	150.240,45	184.214,79	278.699,90	239.259,45	271.615,81	233.879,30	248.066,31	264.572,23

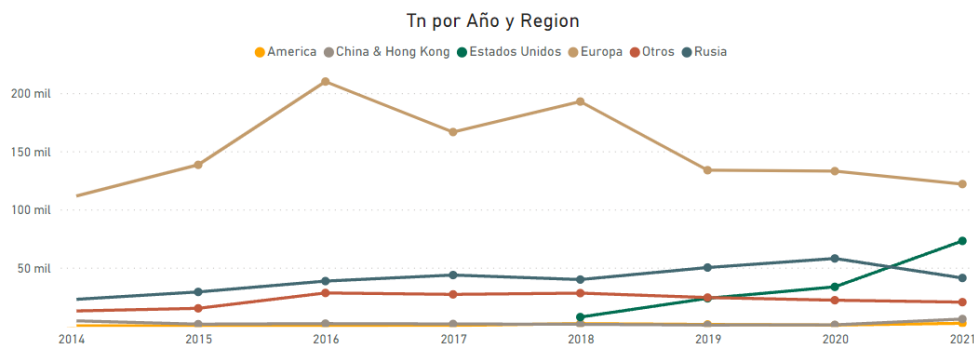
EXPORTACION FRUTA FRESCA ARGENTINA



PRODUCTO
LIMON FRE...
AÑO
Todas
SEMANA
Todas
EXPORTADOR
Todas
REGION
Todas

Region
 America
 China
 Europa
 Otros Destinos
 Rusia

Region	2014	2015	2016	2017	2018	2019	2020	2021	Total
Europa	110.469,42	138.374,99	209.951,79	166.551,12	192.763,78	133.772,00	132.971,99	121.857,16	1.206.712,26
Rusia	22.530,44	29.168,08	38.486,12	43.680,32	39.803,44	50.141,54	57.932,46	41.172,60	322.915,01
Otros	12.737,89	15.080,79	28.297,34	27.060,11	28.148,70	24.357,43	22.068,08	20.391,76	178.142,09
Estados Unidos					7.578,32	23.667,94	33.536,49	73.004,56	137.787,31
China & Hong Kong	4.457,35	1.479,24	1.958,98	1.659,79	1.348,96	726,33	886,92	5.892,92	18.410,48
America	45,36	111,69	5,67	308,11	1.972,60	1.214,06	670,37	2.253,23	6.581,10
Total	150.240,45	184.214,79	278.699,90	239.259,45	271.615,81	233.879,30	248.066,31	264.572,23	1.870.548,24



EXPORTACION FRUTA FRESCA ARGENTINA



PRODUCTO
LIMON FRE...
AÑO
Todas
SEMANA
Todas
EXPORTADOR
Todas
SUBREGION
Todas

Sub Region
 America
 Canada
 China
 Grecia y balcanes
 Iberica

Sub Region	2014	2015	2016	2017	2018	2019	2020	2021	Total
America	45,36	111,69	5,67	308,11	1.972,60	1.214,06	670,37	2.253,23	6.581,10
Canada	4.730,41	6.316,19	9.893,81	10.959,39	10.501,14	8.053,17	6.395,25	8.360,74	65.210,10
China & Hong Kong	4.457,35	1.479,24	1.958,98	1.659,79	1.348,96	726,33	886,92	5.892,92	18.410,48
Estados Unidos					7.578,32	23.667,94	33.536,49	73.004,56	137.787,31
Grecia & Balcanes	31.240,47	16.574,71	20.411,39	26.515,61	24.023,11	28.202,18	28.862,99	18.619,81	194.450,27
Iberica	25.856,49	29.130,39	62.341,19	40.622,52	68.085,45	32.373,68	31.843,07	9.183,28	299.436,07
Italia	26.418,40	32.000,05	31.211,92	31.882,24	24.971,65	19.878,66	19.023,96	19.023,96	185.386,89
Medio Oriente	939,90	1.103,58	3.957,09	2.072,59	2.584,45	3.978,47	4.018,15	2.234,17	20.888,39
Norte de Europa	46.594,51	60.442,37	86.867,89	60.993,11	62.225,51	43.846,68	48.646,19	70.311,89	479.928,16
Odessa - Ucrania	5.219,72	10.342,78	9.699,69	11.487,65	9.459,52	9.702,73	7.220,55	7.220,55	63.132,64
Otros Destinos	5.271,13	673,10	501,58	208,66	156,68	227,04	480,52	803,36	8.322,05
Reino Unido	6.777,95	5.809,12	8.331,28	7.207,95	6.547,47	4.377,81	3.741,07	4.718,22	47.510,87
Rusia	22.530,44	29.168,08	38.486,12	43.680,32	39.803,44	50.141,54	57.932,46	41.172,60	322.915,01
Sudeste Asiatico	1.796,45	1.768,21	3.602,08	4.119,78	3.418,79	2.639,24	1.471,42	1.772,94	20.588,92
Total	150.240,45	184.214,79	278.699,90	239.259,45	271.615,81	233.879,30	248.066,31	264.572,23	1.870.548,24

